

# The Villas of Wyldewood

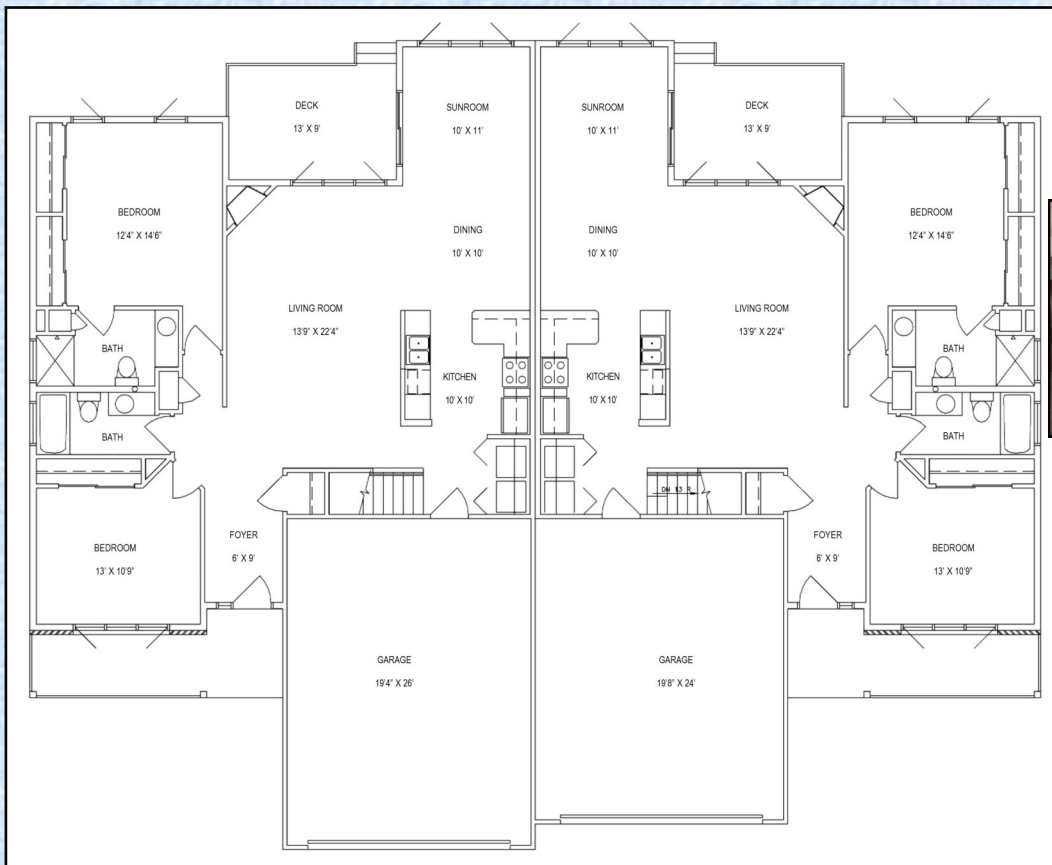


**MIDWEST REAL ESTATE INC. SALES CENTER**  
**WYLDEWOOD DRIVE • (920) 426-2045 • BY APPOINTMENT**



## The Chalet 1442 Sq. Ft.

- 2 Bedrooms
- 2 Full Baths
- 2 Car Garage
- 1st Floor Laundry
- Stain Resistant Carpet
- Gas Fireplace
- Central Air
- Easy Access - No Steps
- Private Deck
- Lake & Walking Trail



All Dimensions, Elevations and Floor Plans are approximate & may be reversed or changed without notice.



## QUALITY INT. FEATURES:

Easy Access - No Steps  
Cathedral Ceilings  
Plant Shelves w/Switched Outlet  
Central Air-Conditioning  
Merillat Oak Faced Cabinetry  
Colonial Oak Trim  
Oak Faced Interior Doors  
Basement 8" Poured Concrete Walls  
No Wax Vinyl Floors in Foyer, Kitchen & Baths  
Stain Resistant Carpet (1 Color)  
200 Amp Electrical Service  
Dishwasher  
Ice Maker Line  
Garbage Disposal  
40 Gallon Water Heater  
Skip Trowel Drywall Finish  
Ceiling Fans  
Microwave Rangehood  
Easy to Use Lever Handles on All Doors  
Maintenance Free Drywall Window Returns  
and Water Resistant Cultured Marble Sills  
Basement Rough In for Future Bath

## ENERGY SAVING FEATURES:

2 x 6 Exterior Home Walls  
High Efficiency Furnace  
High Efficiency Water Heater

## ENERGY SAVING FEATURES (con't):

Low E Insulated Windows  
Insulated Garage Door with Decorative Glass & Opener  
Insulated and Finished Garage  
**OUTSTANDING EXT. FEATURES:**  
Private Patio  
No Maintenance Vinyl Siding  
All Aluminum Soffit and Fascia  
Aluminum Gutters and Downspouts  
Foundation Insulation  
No Maintenance Vinyl Windows  
Professionally Landscaped  
Basement Egress Window and Well  
Asphalt Driveway  
Maintenance Free Aluminum Garage & Front Door Jambs

## POPULAR OPTIONS AVAILABLE:

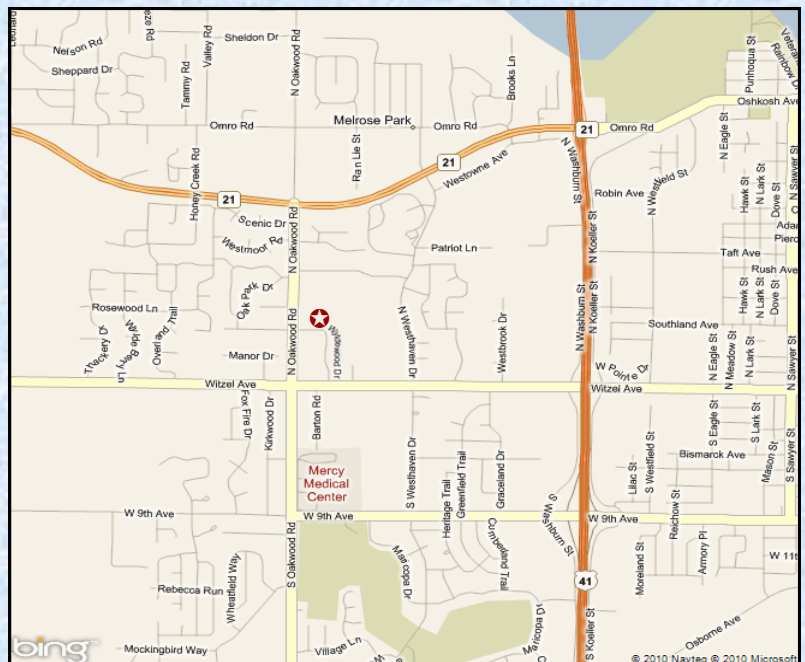
Tile and Hardwood Floors  
Raised Panel Cabinets  
Six Panel Interior Doors  
Medicine Cabinet  
Gas to Range and Dryer  
April Air Humidifier  
Space Guard Air Filter  
Selected Homes With Finished Lower Levels Including a  
Rec Area, Full Bath, Utility Room, Storage &  
Some With Office/Bedroom

The Villas of Wyldewood are conveniently located just minutes from Banks, Grocery Stores, Shopping, Restaurants, Churches, Movie Theaters, Hospitals, and Clinics, and easy access to the Highway makes The Villas of Wyldewood the ideal choice. The Villas of Wyldewood provide easy carefree condominium living at it's finest.

Take advantage of benefits like:  
professional lawn care and snow removal  
extra wide hallways, no steps,  
and combined with 1st floor laundry  
makes every home we build comfortable  
and wheel chair accessible

★ Wyldewood Sales Center ~ (920) 426-2045

Wyldewood Drive ~ Corner of Oakwood and Wyldewood



EQUAL HOUSING OPPORTUNITY

Features, options, prices and closing dates are subject to change without notice.

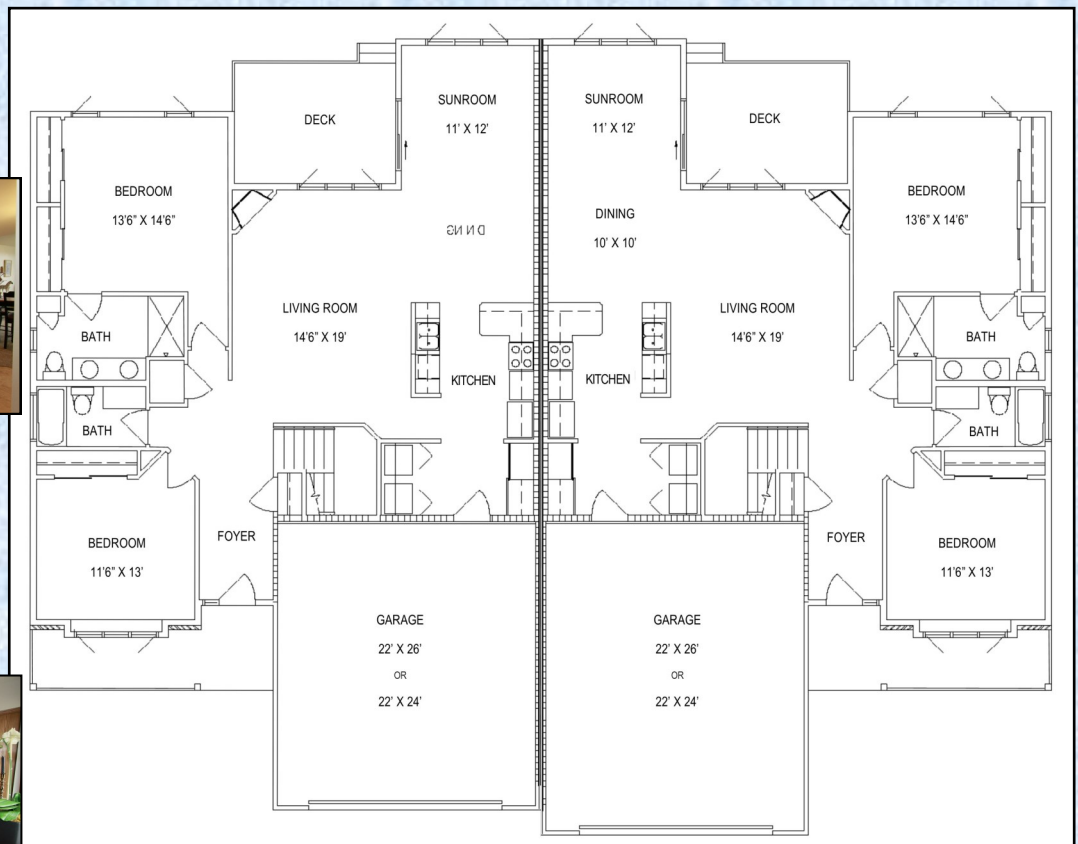
# The Villas of Wyldewood



**MIDWEST REAL ESTATE INC. SALES CENTER**  
**WYLDEWOOD DRIVE • (920) 426-2045 • BY APPOINTMENT**

## The Chateau 1594 Sq. Ft.

- 2 Bedrooms
- 2 Full Baths
- Central Air
- Private Deck
- Full Basement
- Large 2 Car Garage
- Direct Vent Gas Fireplace
- 1st Floor Laundry
- Easy Access - No Steps
- Lake & Walking Trail



All Dimensions, Elevations and Floor Plans are approximate & may be reversed or changed without notice.



## **QUALITY INT. FEATURES:**

Easy Access - No Steps  
Cathedral Ceilings  
Plant Shelves w/Switched Outlet  
Central Air-Conditioning  
Merillat Oak Faced Cabinetry  
Colonial Oak Trim  
Six Panel Pine Interior Doors  
Basement 8" Poured Concrete Walls  
Ceramic Tile Foyer in Baths and Kitchen  
Stain Resistant Carpet (1 Color)  
200 Amp Electrical Service  
Dishwasher  
Ice Maker Line  
Garbage Disposal  
40 Gallon Water Heater  
Skip Trowel Drywall Finish  
Ceiling Fans  
Microwave Rangehood  
Easy to Use Lever Handles on All Doors  
Maintenance Free Drywall Window Returns &  
Water Resistant Cultured Marble Sills  
Basement Rough In for Future Bath

## **ENERGY SAVING FEATURES:**

2 x 6 Exterior Home Walls  
High Efficiency Furnace  
High Efficiency Water Heater  
Low E Insulated Windows  
Insulated Garage Door with Opener  
Finished and Insulated Garages

## **OUTSTANDING EXT. FEATURES:**

Private Deck  
No Maintenance Brick and Vinyl Siding  
All Aluminum Soffit and Fascia  
Aluminum Gutters and Downspouts  
Foundation Insulation  
No Maintenance Vinyl Windows  
Professionally Landscaped  
Egress Basement Window Well  
Asphalt Driveway  
Maintenance Free Aluminum Garage and  
Front Door Jambs

## **SPECIAL FEATURES:**

Custom Kitchen Cabinets  
High Definition Counter Tops with  
Undermount Sink  
Comfort Level Toilets  
Textured Shingle Roofs  
Front Bedroom Window Seat  
Selected homes with Finished Lower Level  
Including a Rec Area, Full Bath, Utility  
Room, Storage and Some With Office/  
Bedroom

## **POPULAR OPTIONS AVAILABLE:**

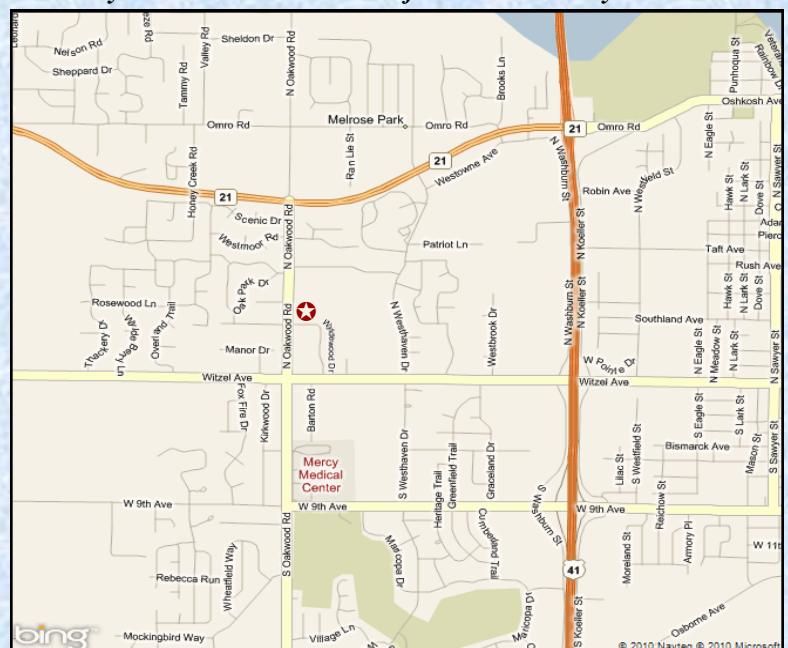
Tile and Hardwood Floors

The Villas of Wyldewood are conveniently located just minutes from Banks, Grocery Stores, Shopping, Restaurants, Churches, Movie Theaters, Hospitals, and Clinics, and easy access to the Highway makes The Villas of Wyldewood the ideal choice. The Villas of Wyldewood provide easy carefree condominium living at it's finest.

Take advantage of benefits like:  
professional lawn care and snow removal  
extra wide hallways, no steps,  
and combined with 1st floor laundry  
makes every home we build comfortable  
and wheel chair accessible

 **Wyldewood Sales Center ~ (920) 426-2045**

**Wyldewood Drive ~ Corner of Oakwood and Wyldewood**



EQUAL HOUSING OPPORTUNITY

\*Features, options, prices and closing dates are subject to change without notice.

# The Villas of Wyldewood



**MIDWEST REAL ESTATE INC. SALES CENTER**  
**WYLDEWOOD DRIVE • (920) 426-2045 • BY APPOINTMENT**

## New Duplex Condominiums

All include complete outside lawn care/ snow removal

◆ **320 Wyldewood Drive      \$258,900      Available Now**

**Chalet 1442 upper / 590 finished lower / 2032 Total Sq. Ft.**

Spacious 2 Bedroom 2 Full Bath open floor plan with easy access no step design. Beautiful sunroom opens to covered deck patio. Great room features a cozy gas fireplace and skylight. First floor laundry fits full sized appliances. Fully finished lower level with Recreational room, full bath with shower and spare room with walk in closet. Large fully finished and insulated 2 car garage with insulated door and opener. 1442 Square feet of living space upper and additional 583 square feet of finished basement.

◆ **262 Wyldewood Drive      \$218,900      Available Now**

**Chalet 1442 Sq. Ft.**

Beautiful open floor plan with 2 Bedrooms and 2 Full Baths. Cheerful sunroom off kitchen opens onto outdoor deck. Great room includes Gas Fireplace with tile surround. First floor laundry area fits full sized appliance. Large 2 car fully finished and insulated garage with insulated door and opener. Full sized basement suitable for recreational room and pre plumbed for bathroom. Plenty of storage. Easy access with no step design.

◆ **490 Wyldewood Drive      \$284,900      Available February 2018**

**Chateau 1594 upper / 875 finished lower / 2469 Total Sq. Ft.**

Our Premium Condominium Home with 2 Bedrooms and 2 Full Baths. Sunroom with vaulted ceiling and arched window opens to outdoor deck with vinyl railings. Great room has large windows and gas fireplace with tile surround, ceiling fans and lighted plant shelf. Six panel wood stained doors throughout. The kitchen features Merillat oak paneled cabinets, built in sink, ceramic tile floors, pantry closet and space for full sized washer and dryer. Master bath has a double sink, ceramic tile, linen closet and opening window. Tiled foyer has a beautiful U shaped stairway leading to a completely finished lower level with 3rd bedroom, full bath with shower, recreational room and plenty of storage area. The large 2 car garage is drywalled and insulated with garage door opener and insulated door.

Midwest Real Estate, Inc. • 2990 Universal Street, Suite C • Oshkosh, WI 54904 • (920) 426-2045

*Features, Options, Prices and Occupancy are subject to change without notice.*

EQUAL HOUSING OPPORTUNITY

REV 01/17/18



# The Villas of Wyldewood



**MIDWEST REAL ESTATE INC. SALES CENTER**  
**WYLDEWOOD DRIVE • (920) 426-2045 • BY APPOINTMENT**

## QUALITY FEATURES INCLUDE:

- ◆ Carefree Condominium Living at its Finest
- ◆ Tranquil Setting of Havenwood Lake & Walking Trail
- ◆ Spacious 2 Bedroom, 2 Bath Floor Plans
- ◆ Easy Access No-Step Design
- ◆ Maintenance Free Aluminum Garage Door Jambs
- ◆ Maintenance Free Aluminum Front Door Jambs
- ◆ Maintenance Free Vinyl Front Porch Railing
- ◆ Insulated and Drywall Finished Garages
- ◆ Keyless Overhead Garage Door Entry
- ◆ Large Basement Egress Window Well for Future Living Space
- ◆ Basement Plumbing Rough In for Future Bath
- ◆ Ceramic Tile in Front Foyer, Baths and Kitchen
- ◆ Decorative Glass Front Entry Door and Side Lite
- ◆ Maintenance Free Drywall Window Returns
- ◆ Maintenance Free Cultured Marble Window Sills
- ◆ Crown Molding on Kitchen Cabinets
- ◆ Convenient Space-Saving Microwave Rangehood
- ◆ Dishwasher, Garbage Disposal & Refrigerator Water Line
- ◆ Medicine Cabinets in Bathrooms
- ◆ Fiberglass Tub and Shower Surrounds
- ◆ Gas Fireplace with Tile Surround
- ◆ Easy to Use Lever Handles on All Doors
- ◆ Ceiling Fan in Living Room
- ◆ Ceiling Fan & Light Kit in Master Bedroom & Sunroom
- ◆ Private Deck off Sunroom or Dining Area
- ◆ Custom Kitchen Cabinets
- ◆ High Definition Kitchen Countertop w/Under Mount Sink
- ◆ Textured Shingle Roof
- ◆ Front Bedroom Window Seat
- ◆ Windows for Natural Light in Baths
- ◆ Large Vanity in Master Bath with Double Sink
- ◆ Wired for Telephone and Cable

Notes: \_\_\_\_\_  
\_\_\_\_\_  
\_\_\_\_\_  
\_\_\_\_\_  
\_\_\_\_\_  
\_\_\_\_\_

Midwest Real Estate, Inc.  
2990 Universal Street, Suite C  
Oshkosh, WI 54904  
(920) 426-2045

*Features, Options, Prices and Occupancy are subject to change without notice.*  
EQUAL HOUSING OPPORTUNITY